

stone
FASO

QUARTZ 2019 COLLECTIONS
SURFACE



FOSHAN FASA BUILDING MATERIAL CO.,LTD.
10th Floor, Building T6, Smart City, 1st Jihua Road,
Chancheng District, Foshan, Guangdong Province,China
T:+86-757-8277 3581 F: +86-757-8277 3585
info@fasastone.com - sales@fasastone.com
www.fasastone.com



ABOUT FASA STONE

The heart and soul of the company is creativity and innovation - Bob Lger

FASA STONE locates in Foshan, Guangdong Province, South China. Always stays ahead of the engineered quartz stone slabs market.

FASA stands for Family, Army, School and Alliance.

Foremost, FASA STONE owns 4 factories nowadays. Our products are sold to more than 60 countries around the world - America counts for 40%, Europe occupies 35% and the rest of the world takes 25%. Experienced sales team and high performance factories work together to make our company growing fast and stable.

Accurately, FASA owns 10 automatic production lines with daily capacity of 1000 slabs and annual capacity more than 1.5 million SQM. We are also good at cut-to-size projects and countertop fabrication. With strong team, we are able to produce nearly all the popular or special colors in the market. We have perfect color series now and keeps updating.

Simultaneously, FASA STONE achieved the certificates of NSF, Greenguard, CE, OU. The products are safe materials for direct food contact and environment-friendly. They give the assurance of maximum safety and protection to customers. We offer the distributors and customers a 15 years warranty with strong confidence in the quality standard.

Aftertime, FASA will not only keep improving the product quality and customer service, but also betake itself to be a company that approved by quartz industry, customers and staff. Besides, honest, practical and positive always be FASA's idea.

We heartily expect to cooperate with you!

Contents

Marble
Collection

1-6

Leather
Collection

7-12

S-Tech
Collection

13-18

Basic
Collection

19-24

Marble Collection

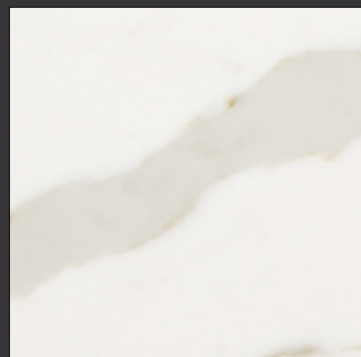
FASA STONE



FS3019

Calacatta Golden

FS3019 Polish



FS3019L



FS3019R

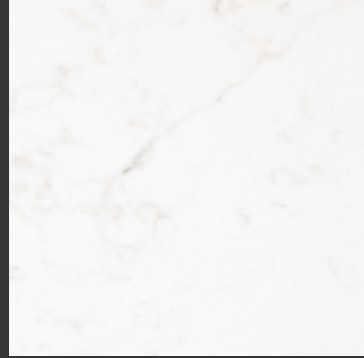


FS3019

Marble Collection

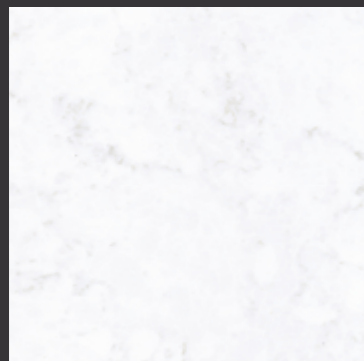
New Carrara

FS8211 Polish



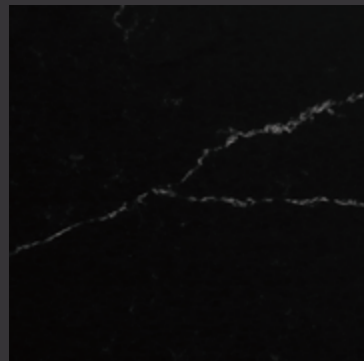
Morning Breeze

FS8312 Polish



Opera

FS8185 Polish



FS8185

Leather Collection

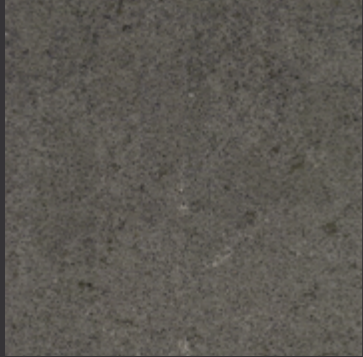
FASA STONE



FS6061

Concrete Dark

FS6036 Leather



Metallic Grey

FS6122 Leather



Concrete Light

FS6037 Leather



Metallic Brown

FS6061 Leather



FS6037



S-Tech Collection

FASA STONE



FS6029

Beton medium

FS6023 S-Tech



Limestone

FS6029 S-Tech



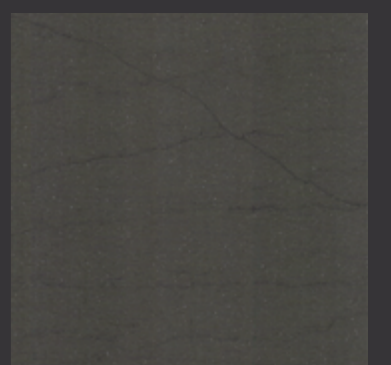
Beton light

FS6025 S-Tech



Basalt

FS8227 S-Tech



Beton dark

FS6028 S-Tech





Basic Collection

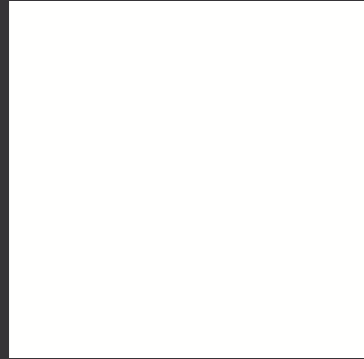
FASA STONE



FS1001

Super White

FS1001 Polish



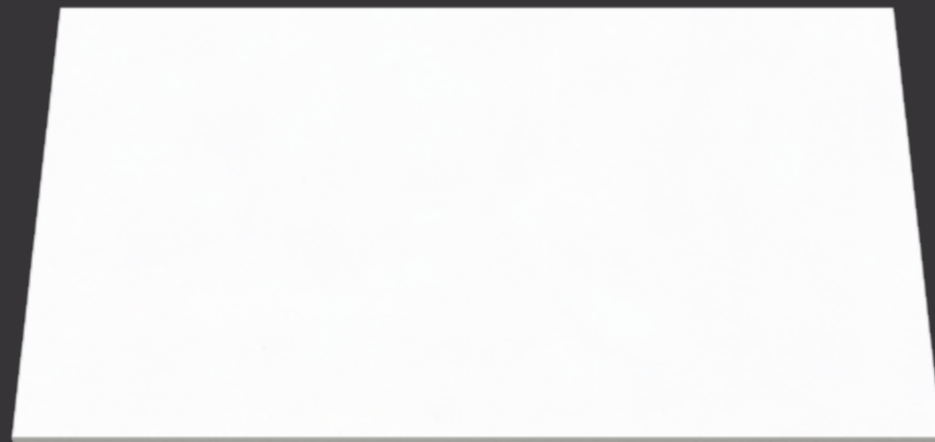
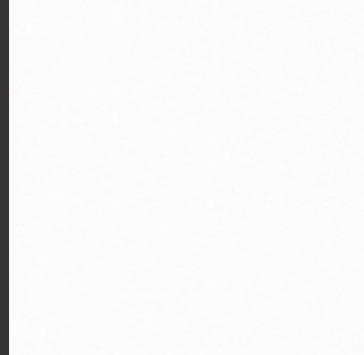
Cement

FS1024 Polish



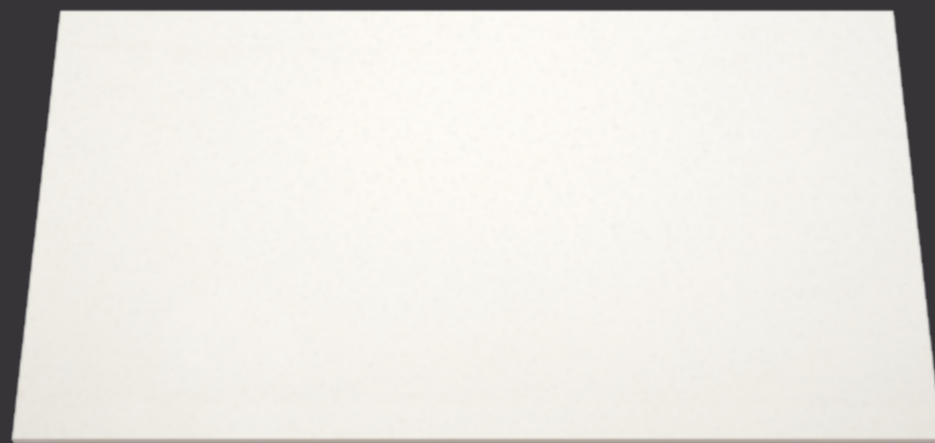
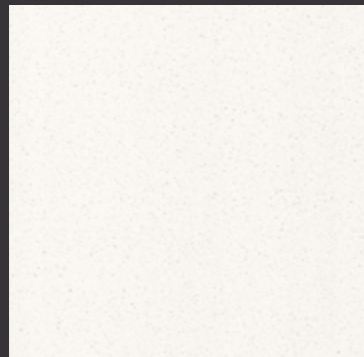
Arctic White

FS1011 Polish



Naxos

FS1012 Polish

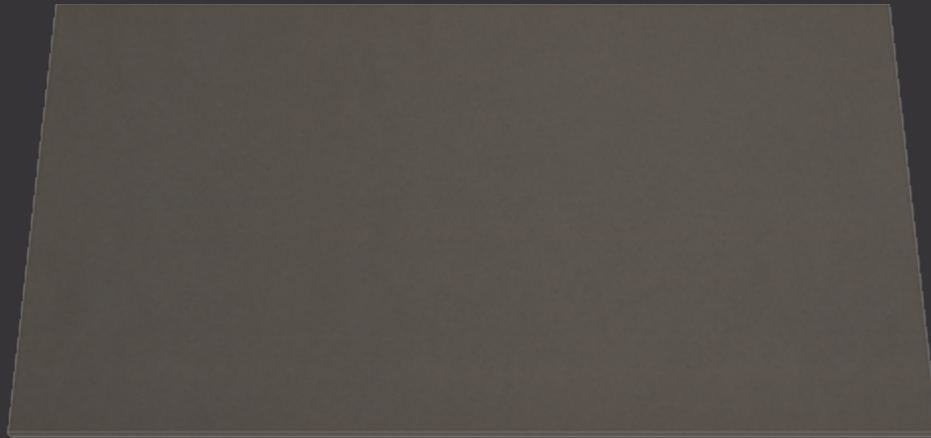


FS1012

Basic Collection

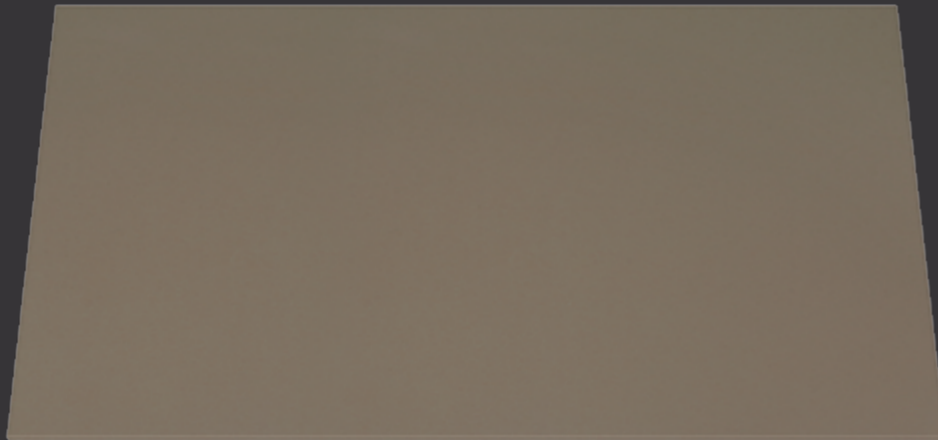
Beau Grey

FS1028 Polish



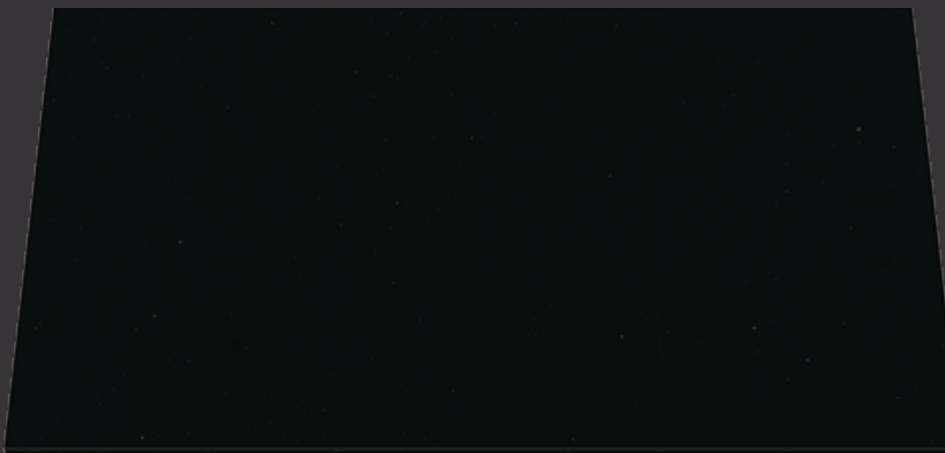
Capuccino

FS1066 Polish



Black Diamond

FS5081 Polish



FS5081

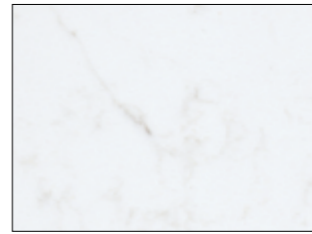
Marble Collection



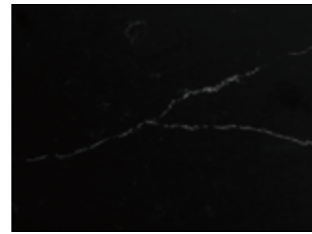
Calacatta Golden - FS3019
□ Polish



Morning Breeze - FS8312
□ Polish



New Carrara - FS8211
□ Polish



Opera - FS8185
□ Polish

S-Tech Collection



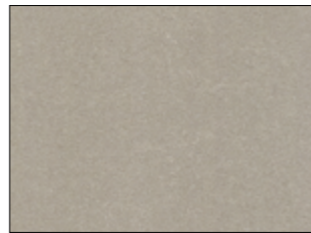
Basalt - FS8227
■ S-Tech



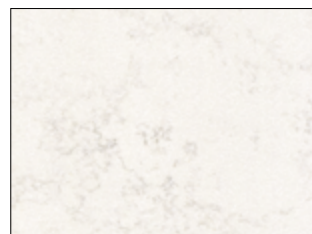
Beton dark - FS6028
■ S-Tech



Beton medium - FS6023
■ S-Tech



Beton light - FS6025
■ S-Tech



Limestone - FS6029
■ S-Tech

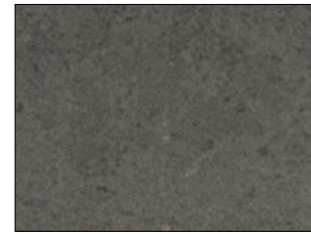
Leather Collection



Metallic Brown - FS6061
▨ Leather



Metallic Grey - FS6122
▨ Leather



Concrete Dark - FS6036
▨ Leather

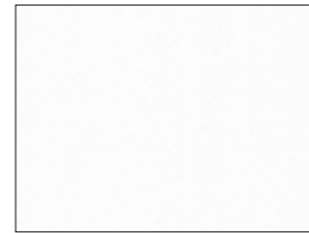


Concrete Light - FS6037
▨ Leather

Basic Collection



Super White - FS1001
□ Polish



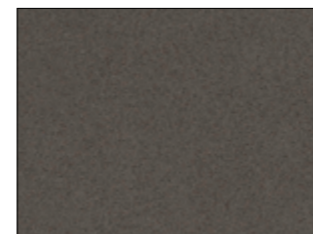
Arctic White - FS1011
□ Polish



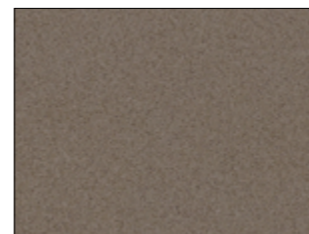
Naxos - FS1012
□ Polish



Cement - FS1022
□ Polish



Beau Grey - FS1028
□ Polish



Capuccino - FS1066
□ Polish



Black Diamond - FS5081
□ Polish

MANUFACTURING PROCESS



Excellent Raw materials

Our surfaces are composed of up to 93% quartz, and are therefore designed to last.

Materials Mixing

Raw materials are inspected , then fed into mixers and blended together.Pressing Materials as Slabs

The mixture is then poured into a mold and formed into a slab.The slab is then compacted by a special vacuum and vibration process at a pressure of 100 tons .

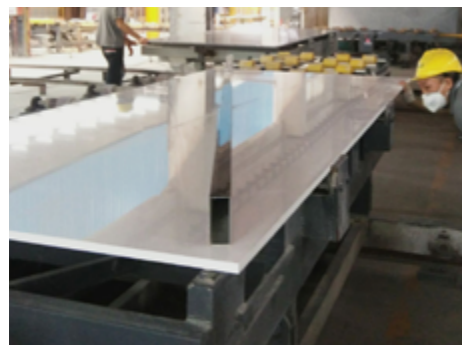


Curing Slabs

The slabs are moved to the curing kiln and heated to 90°C for 45 minutes which gives them the ultimate strength and solidity.

Polishing Slabs

Slabs are then gauged , calibrated and polished to a perfect finish in a wide range of colors and designs.



Slabs Quality Control

Quality Control is very important to FASASTONE. We select only the finest raw materials, which undergo an exacting series of production processes at our state - of - the - art manufacturing facilities. Each and every one of our finished product is polished to perfection, and ready to be rigorously examined, before declaring it flawless , and ready to be incorporated into your designs .

Slabs Storage & Loaded

Slabs must be stored in a manner that prevents warping. Use at least two support beams at an angle of 15° from the vertical , measuring a height of 50" (1,270 mm) , and at a distance of 70 " (1,778 mm) apart. Each slab is then marked and labeled with all relevant information.

Packing for Transport

Countertop sections are normally heavy and fragile . Consideration must be given to portability and site access when planning and packing for transport. Brace all cutouts to avoid flexing of the seams and corners.



Production Lines	Slabs / Day	Slabs / Month	Sqms / Month	Sqms / Year
10	1000	25000	125000	1,500,000

QUARTZ STONE ADHESIVE



- Laminating/Seaming/Beveled mounting system
- Reduce waste,Eliminate Hand Mixing and Tinting
- Create invisible seams and laminations
- The standard formula allows to reach handling strength within minutes
- It keeps its color unalterable over time
- Highly resistant to any kind of solvent
- Cures in as little as 20 minutes



50ml-SBS Acrylic Adhesive



50ml-Dispenser



250ml-SBS Quartz Adhesive



250ml-Dispenser

Ingredient	Methyl methacrylate, Aluminum Hydroxide
Application	Artificial quartz stone
Working time (24°C/75.2°F)	8-10minutes
Fixture time (24°C/75.2°F)	18-22 minutes
Shelf Life (10/50°F - 18°C/64.4°F)	24months
Viscosity CPS (24°C/75°F)	A(18000-22000), B(4000-6000)
Mix Ratio(Weight & Volume)	A:B=10:1
Mixed Specific Gravity	1.04
Color Matching Effect	Seamless joint
Extension meter of once dispense	6-8m
Operation Temperature	24°C/75°F above is suggested
UV stability	8 years non yellowing
Bond strength	Three -point anti-crack test: 35.8Mpa-43.08 Mpa, Cantilever beam test 3.28KJ/m ² -3.73KJ/m ²
Temperature tolerance	-55°C/-67°F - 185°C/365°F

CUT TO SIZE

FASASTONE fabrication factory is a professional fabricator for engineered quartz stone countertops and vanity tops. It locates in Guangdong province, south part of China. The factory is equipped with the latest machines for countertop fabrication. With a strong team of highly experienced and professional workforce in the industry, Fasastone fabrication factory is able to take all sorts of projects.



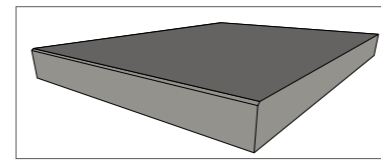
CUT TO SIZE

Countertop edges are a small detail that can add huge impact to your kitchen or bathroom.

At FASASTONE, we've invested in the most technologically advanced machinery to mold and sculpt coenter edges with precision and accuracy. Computer templating and state-of-the-art cutting and polishing machines, along with our technical expertise, give us a huge competitive edge in the industry.

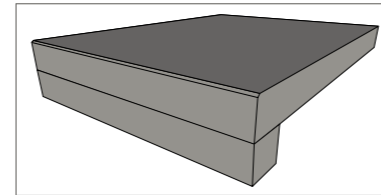
Since every customer has a unique sense of style, we offer three different standard edge profiles.

At FASASTONE, we never compromise on quality. We take pride in our ability to deliver the highest quality stone countertops with professional finishes.



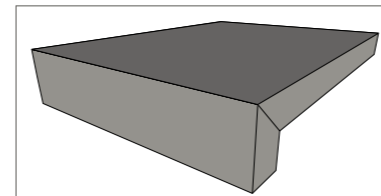
EASED

Simple edges are the original thickness of the table. Are quick and easy to prepare. Most automatic machinery is designed to develop simple edges.



LAMNATED

The laminated edge is an edge assembled from two pieces, to give a countertop with less weight the appearance of a much heavier one.



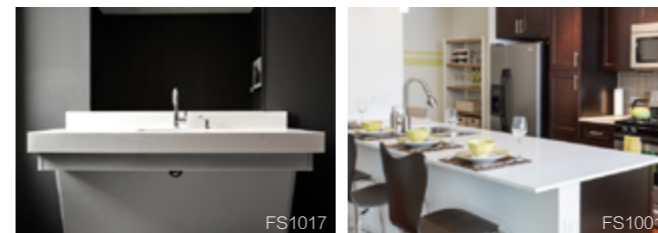
MITERED

Cut along the top at a more or less 45-degree angle. The straight lines and slight decoration add a touch of elegance to a small kitchen.

Project in America



Project in Sweden



TECHNICAL SPECIFICATION

TEST ITEM	TEST METHODS	TEST RESULTS	
APPARENT DENSITY	EN 14617-1:2013	2.34 g/cm ³	
WATER ABSORPTION	EN 14617-1:2013	0.01%	
MOH'S HARDNESS	EN 101	7	
FLEXURAL STRENGTH	EN 14617-2:2016	42.2MPa	
SLIP RESISTANCE (POLISHED)	EN 14231:2003	SRV "dry": 62 SRV "wet": 17	
ABRASION RESISTANCE	EN 14617-4:2012	23.0mm	
THERMAL SHOCK RESISTANCE	EN 14617-6:2012	Mass loss:0.03% Appearance: No visible defects Flexural strength after thermal shock:44.2MPa Flexural strength loss: -4.7%	
IMPACT RESISTANCE	EN 14617-9:2005	11.22J	
LINEAR THERMAL EXPANSION COEFFICIENT	EN 14617-11:2005	23.5×10 ⁻⁶ /°C	
DIMENSIONAL STABILITY	EN 14617-12:2012	Class: A	
FROST AND THAW RESISTANCE	EN 14617-5:2012	Flexural strength after freeze and thaw resistance: 44.1MPa The change in flexural strength: 104.5%	
BREAKING LOAD AT DOWEL HOLE	EN 14617-8:2007	5660 N	
SURFACE RESISTIVITY	EN 14617-13:2015	1.56×10 ¹² Ω/sq	
VOLUME RESISTIVITY	EN 14617-13:2015	3.42×10 ¹³ Ω-cm	
THERMAL CONDUCTIVITY	EN 15285:2008 Section 4.2.10 & EN 12664:2001 Heat flow meter method	0.746W/(m-K)	
CHEMICAL RESISTANCE	EN 14617-10:2012	Rating: C ₄	
RESSISTANCE TO CHEMICALS AND STAINING AGENTS	EN 14688,CLAUSE 5.5	STAINING AGENT	CLEANING TEST
		CH ₃ COOH (10% V/V)	Removal
		NaOH (5% m/m)	Removal
		C ₂ H ₅ OH (70% V/V)	Removal
		NaOCl (5%)	Removal
		METHYLENE BLUE (1% m/m)	Removal
RELEASE OF DANGER SUBSTANCES(REACH)	SGS In-House method- GZTC CHEM-TOP-092-01, GZTC CHEM-TOP-092-02, Analyzed by ICP-OES, UV-VIS, GC-MS, HPLC-DAD/MS and Colorimetric Method.	Pass	

PACKING INFORMATION

SLABS PER 20' CONTAINER

SIZE	THICKNESS (MM)	PCS	BUNDLES	KGS/BUNDLE	SQM	WEIGHT(KGS)
3000x1400mm or 118"x55"	12	175	7	3150	735	22050
3000x1400mm or 118"x55"	15	140	7	3150	588	22050
3000x1400mm or 118"x55"	20	108	7	3240	453.6	22680
3000x1400mm or 118"x55"	30	72	7	3240	302.4	22680
3200x1600mm or 126"x63"	20	105	7	3840	537.6	26880
3200x1600mm or 126"x63"	30	70	7	3700	358.4	25903

QUALITY CERTIFICATES & WARRANTY

FASASTONE is internationally certified to ensure maximum safety and protection. Such certificates offer consumers the assurance that FASASTONE is a safe, top-quality material. Our certificates offer a 100% guarantee.



NSF

FASASTONE was evaluated and certified by NSF International as a safe material for direct food contact. This gives the assurance of maximum safety and protection to our customers and final consumers.



CE

CE stands for Conformance Européenne, the French phrase for European Conformity. It is a standard that applies to a wide range of objects created and sold in the nation belonging to the European Union. CE certification is designed to protect EU consumers by regulating products to reduce possible dangers to people and the environment.



GREENGUARD

The GREENGUARD Indoor Air Quality Certification Program identifies low-emitting materials, finishes and materials with low indoor environments. Performance-based, field-validated standards are used to define products and materials with low chemical and particle emissions for indoor use. Products are required to be tested annually for more than 10,000 individual volatile organic compounds (VOCs).



GREENGUARD CHILDREN & SCHOOLS SM

Certification program was developed by evaluating chemical sensitivities of children along with unique building characteristics of schools. It presents the most stringent product emissions criteria to date for low-emitting materials.



15 YEARS WARRANTY

It is essential for us to ensure that FASASTONE retains its functionality, its beauty, its strength...for years. Therefore, we pledge to 15 years warranty. Because your tranquility is our priority. We fully support our products, and we are always at your service to answer questions, solve problems and make sure you get the maximum satisfaction of our products FASASTONE.



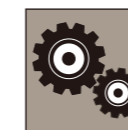
ORTHODOX UNION KOSHER

The Hebrew word kasher (kosher in English), means "proper or acceptable." Kosher certification becomes an application which benefits consumers all over the world. It is a powerful certification in the areas of food production and contact. FASASTONE achieved this test and promise to provide safe products to our customers.

QUALITY QUARTZ SURFACE

Quartz is one of the nature's hardest minerals. Our surfaces are composed of up to 93% quartz, and are therefore designed to last.

In an unique FASASTONE process, we take the innate strength of quartz and combine it with numerous polymers and dyes of pigments. The result: A range of durable and beautiful quartz surfaces in a wide variety of colors and finishes.



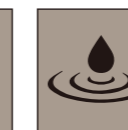
100% engineered Stone



Non Porous



Easy to Clean



Low Maintenance



Shock Resistant



Stain Resistant



Scratch Resistant



Everlasting Sheen



Modern Collection of Colours